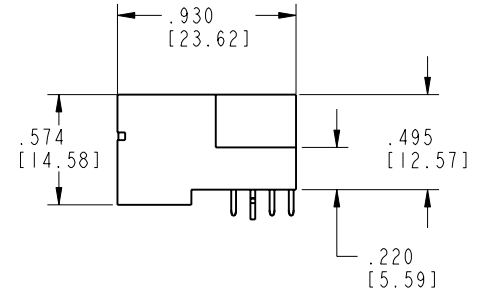
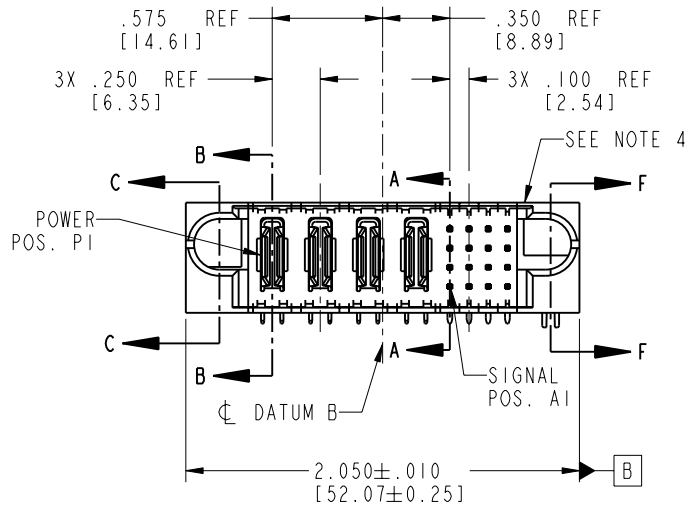
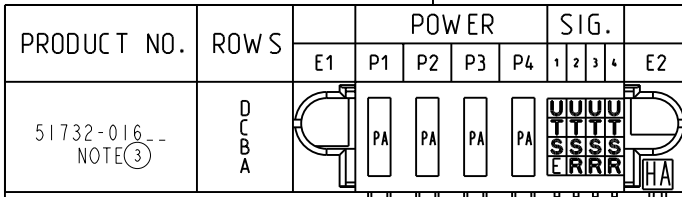


Tous droits strictement réservés. Reproduction ou communication o des liens interdite sous quelque forme que ce soit sans autorisation écrite du propriétaire. Propriété de c FCI. Droits de reproduction FCI.

All rights strictly reserved. Reproduction or issue to third parties in any form whenever is not permitted without written authority from the proprietor. Property of FCI. Copyright FCI.

FCI



CODE	DIM "M" MATING LENGTH	CONTACT TYPE
E	.220 [5.59]	SIGNAL
R	.270 [6.86]	SIGNAL
S	.270 [6.86]	SIGNAL
T	.270 [6.86]	SIGNAL
U	.270 [6.86]	SIGNAL
PA	N/A [N/A]	POWER
HA	N/A [N/A]	HOLD-DOWN

mat'l code				SEE NOTE 2		tolerances unless otherwise specified		CUSTOMER		FCI www.fciconnect.com	
ltr	ecn no.	dr	date	linear	.XX ± .01/0.XX ± 0.3		COPY		title		
A	V03-1013	MEM	9/8/03		.XXX ± .005/0.XX ± 0.13		projection		4P + 16S		
B	V03-1053	TAB	9/24/03	angles	.XXX ± .0020/0.XXX ± 0.051		INCH/MM		RIGHT ANGLE SOLDER HEADER		
C	DG05-0037	SW	03/01/05		0° ± 2°		scale		product family		
D	DG05-0554	GuoJM	12/19/05	dr	M. MOSTOLLER	9/8/03	1:1		PwrBlade		code
				engr	M. MOSTOLLER	9/8/03			size		213
				chr	H. BREWBAKER	9/8/03			dwg no		sheet
				appd	M. MOSTOLLER	9/8/03			A 51732-016		1 of 4
sheet index	revision sheet	D	D	D	D						
		1	2	3	4						

1 | 2

Pro/E

3 |

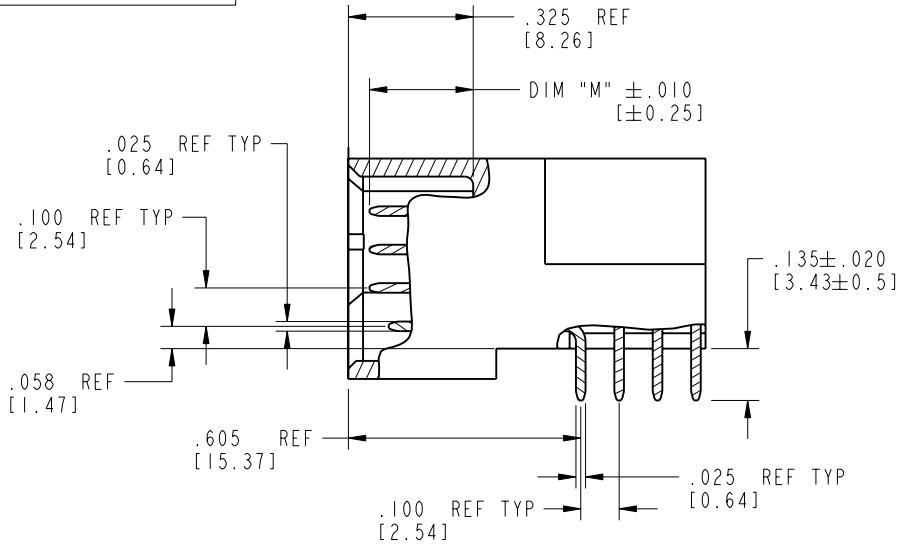
cage code 22526

4

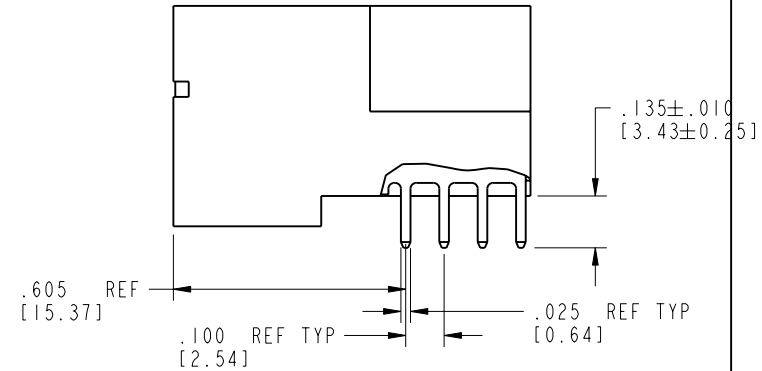
Tous droits strictement réservés. Reproduction ou communication o des liers interdite sous quelque forme que ce soit sans autorisation écrite du propriétaire. Propriété de c FCI. Droits de reproduction FCI.

All rights strictly reserved. Reproduction or issue to third parties in any form, whatever is not permitted without written authority from the proprietor. Property of FCI. Copyright FCI.

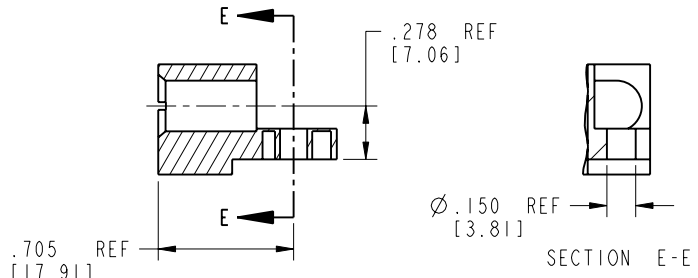
PRODUCT NUMBER
51732-016--
NOTE ③



BROKEN-OUT SECTION A-A
SCALE 2:1

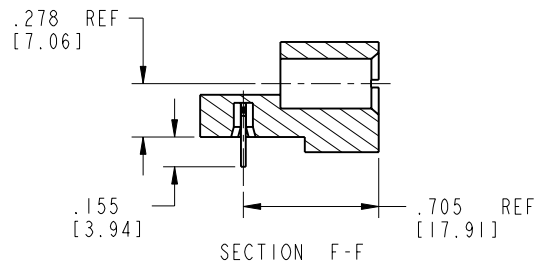


BROKEN-OUT SECTION B-B
SCALE 2:1



SECTION C-C

SECTION E-E



SECTION F-F

mat'l code				SEE NOTE 2		tolerances unless otherwise specified		CUSTOMER		 www.fciconnect.com	
lfr	ecn no.	dr	date	linear	.XX±.01/0.X±0.3		COPY		title		
D	-	-	-		.XXX±.005/0.XX±0.13		projection		4P + 16S		
					.XXX±.0020/0.XXX±0.051				RIGHT ANGLE SOLDER HEADER		
					angles	0° ± 2°		INCH/MM		product family	
				dr	M. MOSTOLLER	9/8/03	scale		PwrBlade		code
				enrg	M. MOSTOLLER	9/8/03	1:1		size		213
				chr	H. BREWBAKER	9/8/03			dwg no		sheet
				appd	M. MOSTOLLER	9/8/03			A 51732-016		2 of 4
sheet index		revision sheet									

cage code 22526

Pro/E

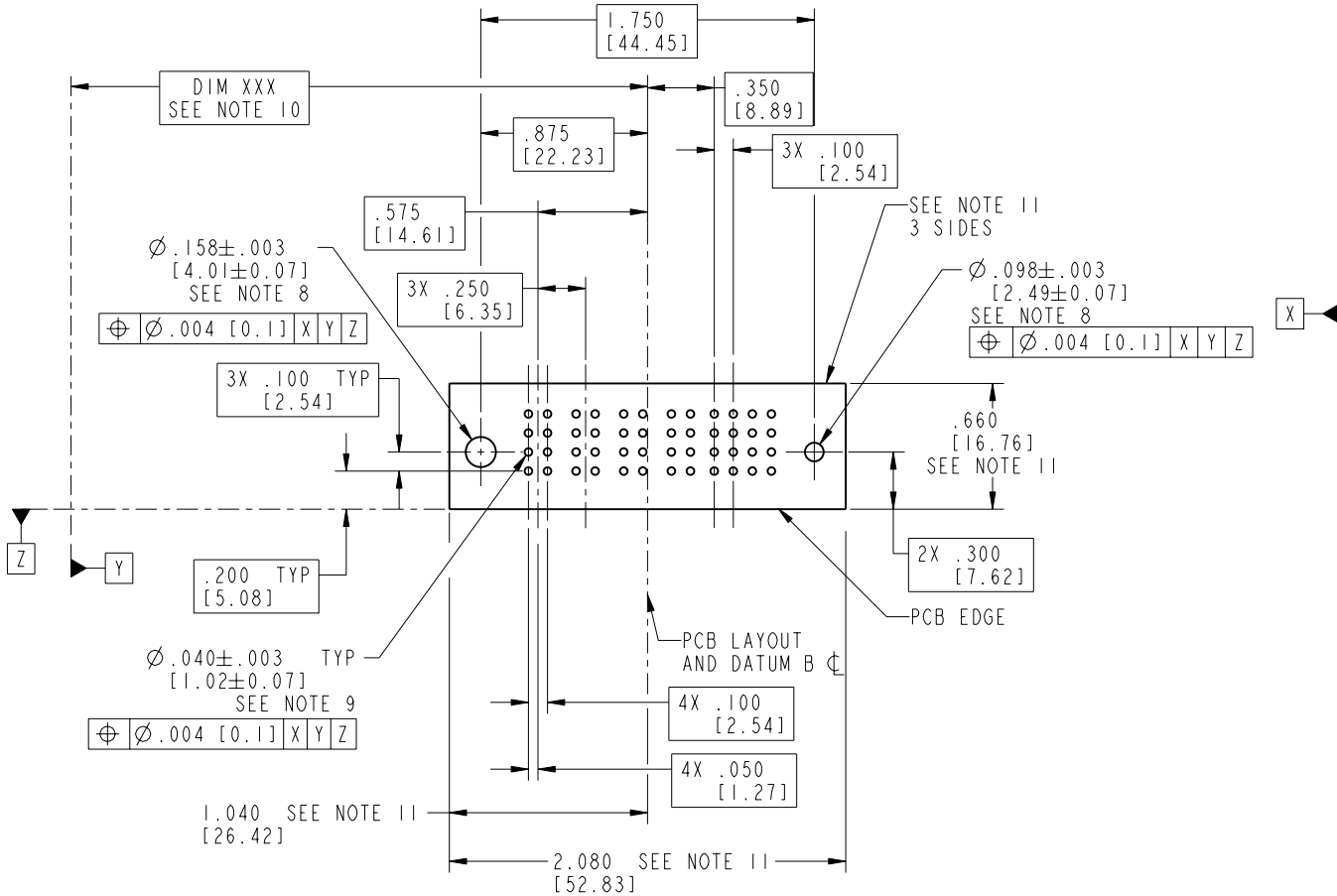
Tous droits strictement réservés. Reproduction ou communication o des liens interdite sous quelque forme que ce soit sans autorisation écrite du propriétaire. Propriété de c FCI. Droits de reproduction FCI.

All rights strictly reserved. Reproduction or issue to third parties in any form, whenever is not permitted without written authority from the proprietor. Property of FCI. Copyright FCI.



PRODUCT NUMBER

51732-016--
NOTE ③



RECOMMENDED PCB LAYOUT

mat'l code		SEE NOTE 2		tolerances unless otherwise specified		CUSTOMER		 www.fciconnect.com	
lfr	ecn no.	dr	date	linear	.XX ± .01 / 0.X ± 0.3	COPY		title	
D	-	-	-	angles	.XXX ± .005 / 0.XX ± 0.13	projection		4P + 16S	
				dr	.XXX ± .0020 / 0.XXX ± 0.051			RIGHT ANGLE SOLDER HEADER	
				enrg	0° ± 2°	INCH/MM		product family	
				chr	M. MOSTOLLER 9/8/03	scale		PwrBlade	
				appd	M. MOSTOLLER 9/8/03	1:1		code	
					M. MOSTOLLER 9/8/03			213	
sheet index	revision sheet							size	
								dwg no	
								A 51732-016	
								sheet	
								3 of 4	

cage code 22526

Pro/E

PDM: Rev:D

STATUS: Released

Printed: Oct 08, 2006

Tous droits strictement réservés. Reproduction ou communication o des liers interdite sous quelque forme que ce soit sans autorisation écrite du propriétaire. Propriete de c FCI. Droits de reproduction FCI.

FCI

All rights strictly reserved. Reproduction or issue to third parties in any form, whatever is not permitted without written authority from the proprietor. Property of FCI. Copyright FCI.

PRODUCT NUMBER

51732-016--
NOTE (3)

NOTES:

1. DIMENSIONS AND TOLERANCES ARE IN ACCORDANCE WITH ASME Y14.5M, 1994 UNLESS OTHERWISE SPECIFIED.

CONNECTOR NOTES:

(2) HOUSING MATERIAL: UL 94 V-0 GLASS FILLED

HIGH-TEMP THERMOPLASTIC
POWER CONTACT MATERIAL: COPPER ALLOY
SIGNAL PIN MATERIAL: COPPER ALLOY

3. PLATING:

51732-016 Signal Pin: 30u"/0.76um Au OVER 50u"/1.27um Ni ON THE CONTACT AREA.
AND 100u"/2.54um SnPb PLATING OVER 50u"/1.27um Ni ON THE TERMINATION SECTION.
Power Pin: 30u"/0.76um Au OVER 50u"/1.27um Ni ON THE CONTACT AREA,
AND 100u"/2.54um SnPb PLATING OVER 50u"/1.27um Ni ON THE TERMINATION SECTION.

51732-016LF Signal Pin: 30u"/0.76um Au OVER 50u"/1.27um Ni ON THE CONTACT AREA.
AND 78u"/2.00um Sn PLATING OVER 50u"/1.27um Ni ON THE TERMINATION SECTION.
Power Pin: 30u"/0.76um Au OVER 50u"/1.27um Ni ON THE CONTACT AREA,
AND 78u"/2.00um Sn PLATING OVER 50u"/1.27um Ni ON THE TERMINATION SECTION.

PART NUMBER 51732-016LF MEETS EUROPEAN UNION DIRECTIVE AND OTHER COUNTRY REGULATIONS AS DESCRIBED IN GS-22-008.

THE HOUSING WILL WITHSTAND EXPOSURE TO 260° PEAK TEMPERATURE FOR 10 SECONDS IN A WAVE SOLDER APPLICATION WITH A CIRCUIT BOARD.

(4) MANUFACTURER'S NAME, P/N, AND DATE CODE TO APPEAR ON THIS SURFACE.

5. PRODUCT SPECIFICATION GS-12-149.
APPLICATION SPECIFICATION BUS-20-067.

6. PACKAGED IN TRAYS.

PCB NOTES:



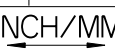
7. ALL HOLE DIAMETERS ARE FINISHED HOLE SIZE.

(8) MOUNTING HOLES, WHERE APPLICABLE, ARE UNPLATED.

(9) $\varnothing .0453 \pm .0010$ [1.151 ± 0.025] DRILLED HOLES PLATED WITH
.0003 [0.008] MIN SnPb OVER .001 [0.03]
TO .003 [0.08] Cu PLATING TO ACHIEVE
 $\varnothing .040 \pm .003$ [1.02 ± .07] HOLE.

(10) "DIM XXX" TO BE DETERMINED BY THE CUSTOMER.

(11) CONNECTOR KEEP-OUT ZONE.

mat'l code				SEE NOTE 2		tolerances unless otherwise specified		CUSTOMER		 www.fciconnect.com	
lfr	ecn no.	dr	date	linear	.XX±.01/0.X±0.3		COPY		 title 4P + 16S RIGHT ANGLE SOLDER HEADER		
D	-	-	-		.XXX±.005/0.XX±0.13		projection				
				angles	.XXX±.0020/0.XXX±0.051		 INCH/MM		product family PwrBlade code 213		
					dr	M. MOSTOLLER	9/8/03	scale 1:1		size 51732-016 sheet 4 of 4	
				enrg	M. MOSTOLLER	9/8/03					
				chr	H. BREWBAKER	9/8/03					
				appd	M. MOSTOLLER	9/8/03					
sheet index		revision sheet								coge code 22526	

Pro/E

3

coge code 22526

4

PDM: Rev:D

STATUS: **Released**

Printed: Oct 08, 2006